

THE NBD CONTEMPORARY HOME COLLECTION

The homes in this collection are the primary designs used by North Beach Development (NBD). Although not exclusive NBD focuses on primarily entry of homes. The based designs consist of the modern farmhouse, the modern craftsman, the modern bungalow, the mid-century post-modern, and modern Eichler. The floor plans range in size from 1,200 to 2,500 square feet.

The construction materials are all fire resistance including metal and tile roofs; fire-resistant attic membrane; stone, stucco and Hardie-board siding; metal framing and Insulated Concrete Form (ICF) concrete walls (See: **RESOURCES – Fire and Earthquake – Resistant Construction**).

All NBD homes contain special interior features including working pantries, kitchen greenhouse rooms; master bath steam/saunas and massage showers; media rooms, combo laundry/hobby rooms, storage window seats and bedroom French doors.

All of NBC accessory dwelling units (ADU) ICF construction and in addition to being traditional second-units they will be fire, earthquake and home invasion resistant. Designed as mini-homes they will contain amenities suitable for entertaining. One design (The garden AUD) will be a traditional living structure which contains garden/work spaces.

A modular building is a prefabricated building that consists of repeated sections called modules. Modularity involves constructing sections away from the building site, then delivering them to the intended site. Installation of the prefabricated sections is completed on site.

A large, light blue barn-style house with a dark grey roof. The house features white vertical siding, a dormer window, and a large window with a decorative awning. It has a large wooden garage door and a covered front porch. The house is surrounded by a green lawn and landscaping.

OUTDOOR LIVING
20/0 X 17/6 +/-

DINING
11/6 X 14/8
(9' CLG.)

GARAGE
10/0 X 17/0 +/-

GARAGE
21/0 X 22/6

VAULTED GREAT RM
16/6 X 18/6 +/-

VAULTED MASTER
12/2 X 16/2

BR. 2
11/0 X 11/2 +/-
(9' CLG.)

BR. 3
12/0 X 12/0
(9' CLG.)

FOYER
(16' CLG.)

PANTRY

BENCH

CLO.

S.H.L.V.S.

D.W.

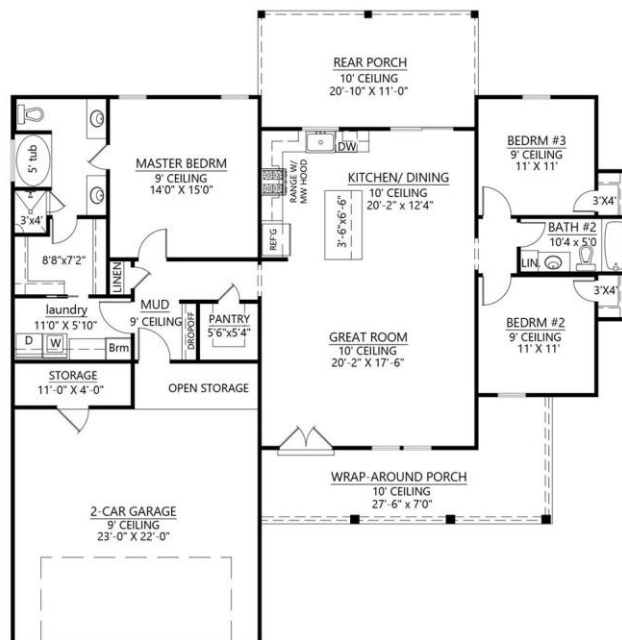
REF.

LINEN

COVERED PORCH

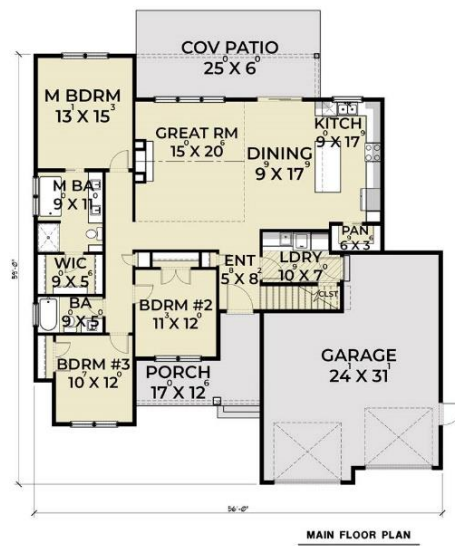


Modern Farmhouse - Shadowcrest 9483 (58' 10" x 60') 1600sf





Modern Farmhouse Contemporary 7416 (56'x59') 1690sf





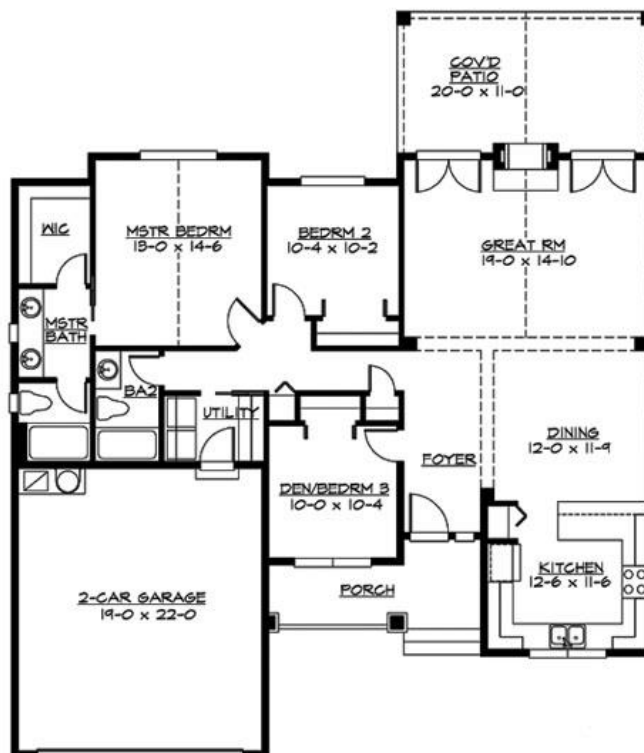
Modern Farmhouse Rocklin 8763 (40'x55'6") 1196sf



Modern Craftsman

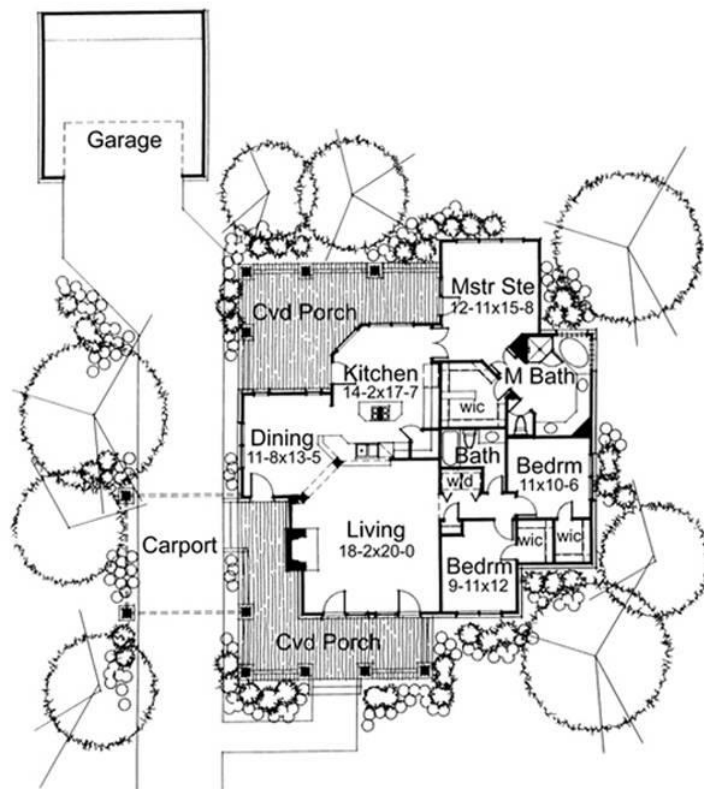


Modern Craftsman Oakley 3240 (50'x58') 1502sf



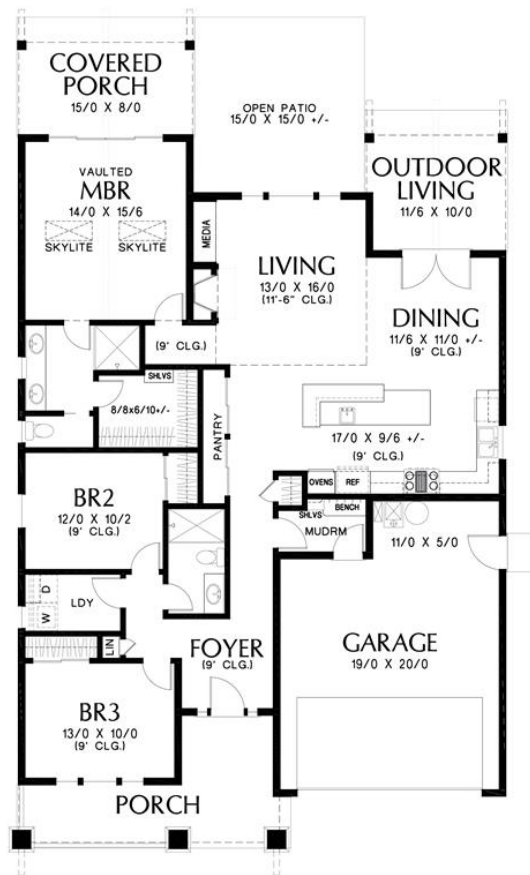


Modern Craftsman – Warton 5769 (48'x58') 1657sf



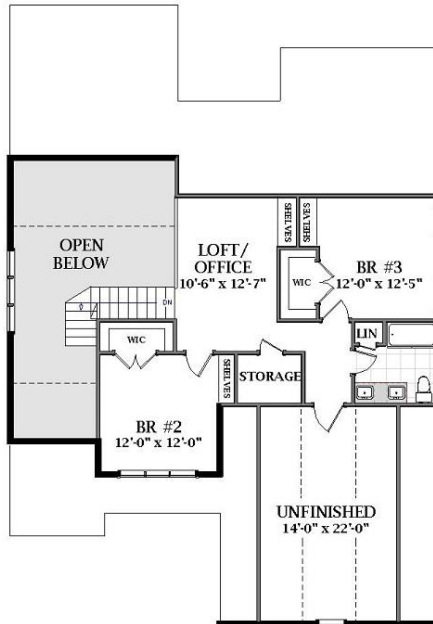
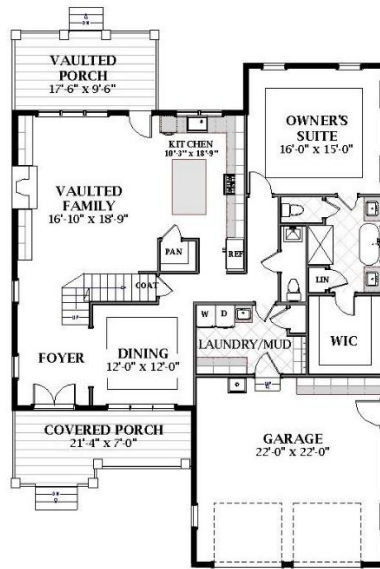


Bungalow Craftsman 9081 (46'x74') 1671sf



THE MADRONE CRAFTSMAN
2337SF, 3/2.5, 2-STORY, 45X64

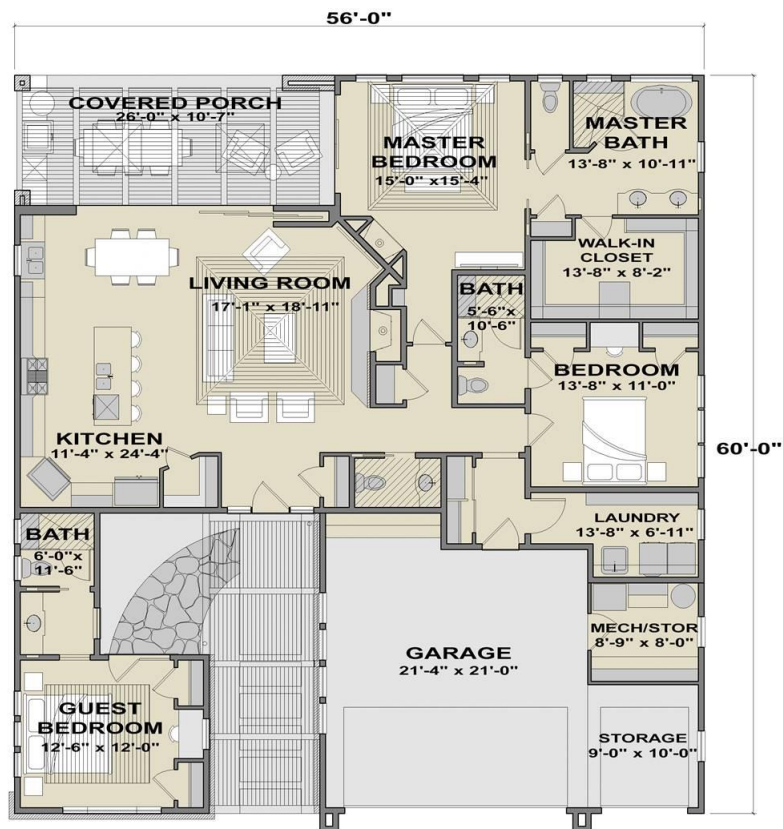




Post Modern

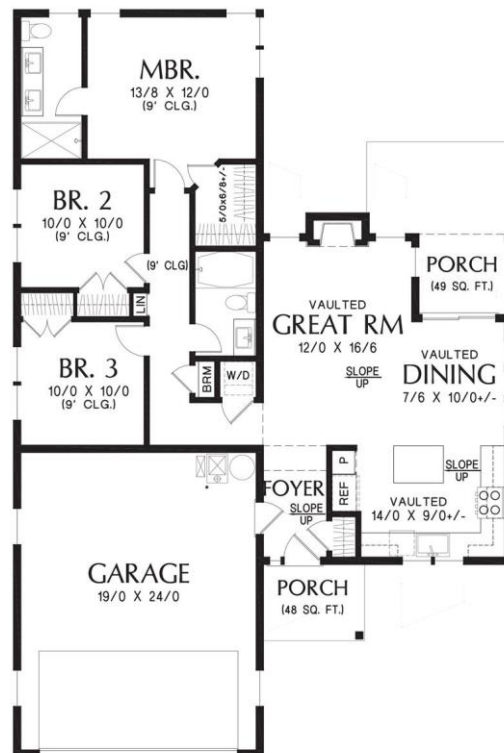


Post Modern Prairie Falls 4845 (56'x61'6") 2090sf



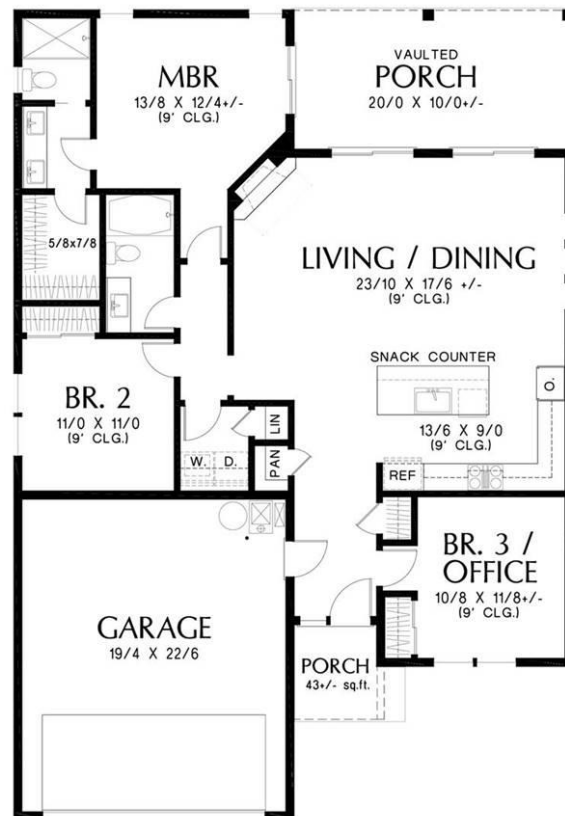


Post-Modern Silvertree 9824 (40'x60') 1196st





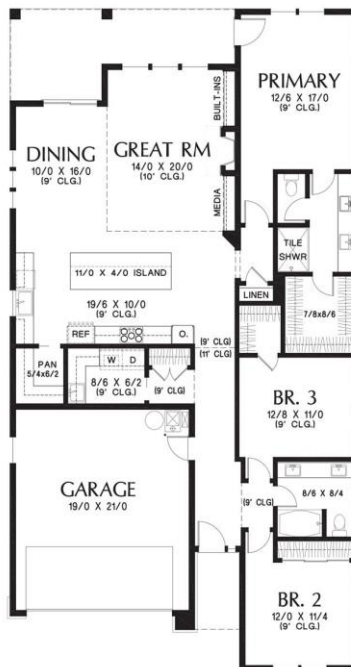
Post-Modern Montecello 5106 (40'x58') 1427sf



Contemporary Homes

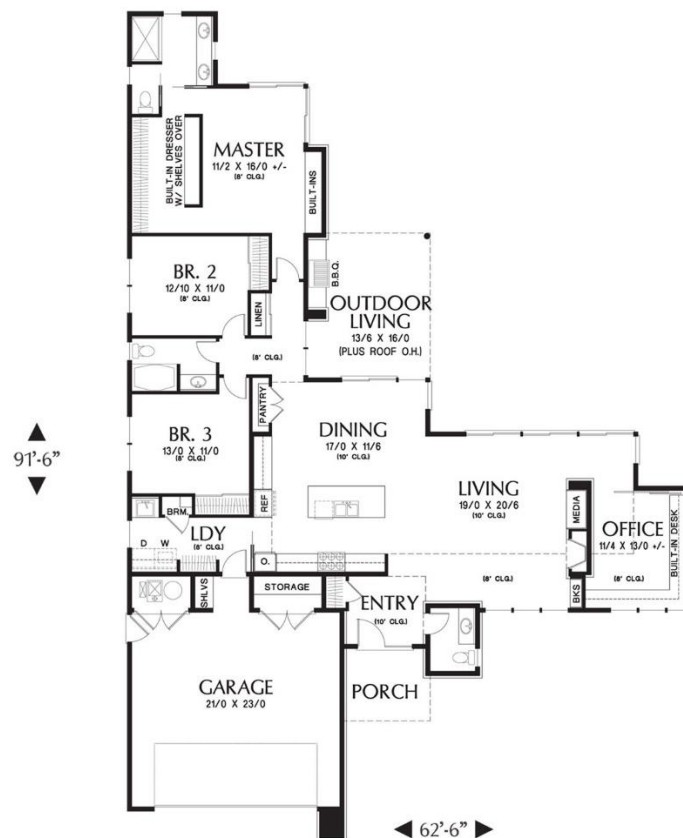


Newburgh Contemporary Ranch 8769 (38'x72') 1922sf



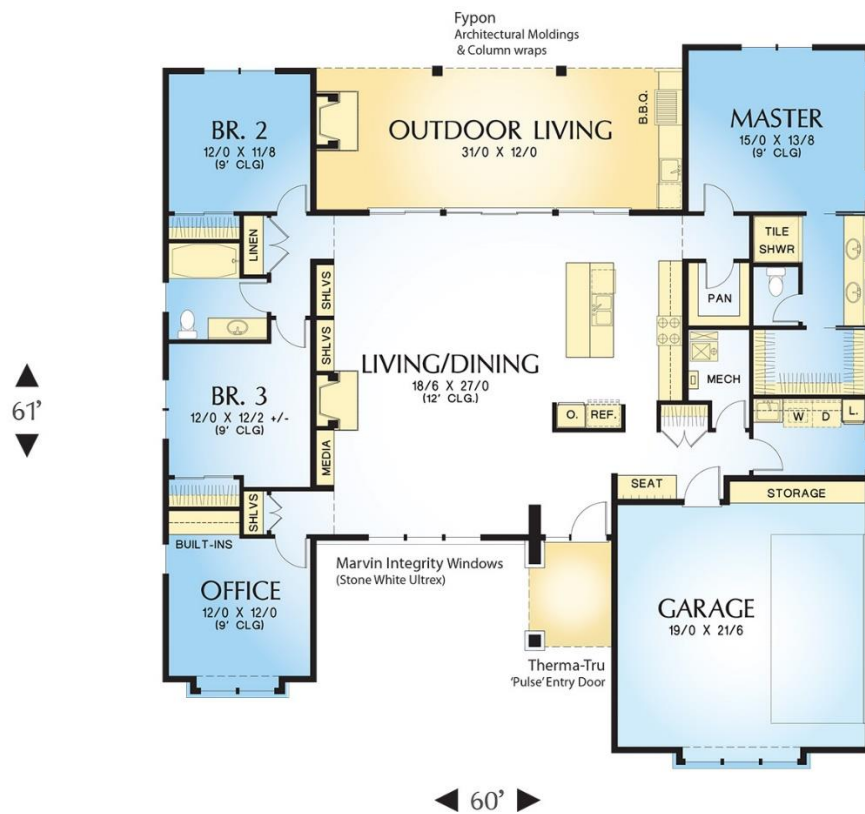


Contemporary Little Compton (62.6'x92') 2159





Contemporary Epping 4727 (60'x61') 2136sf



Accessory Dwelling Unit



ADU RV Garage 9804 (46'x51'6") 540sf



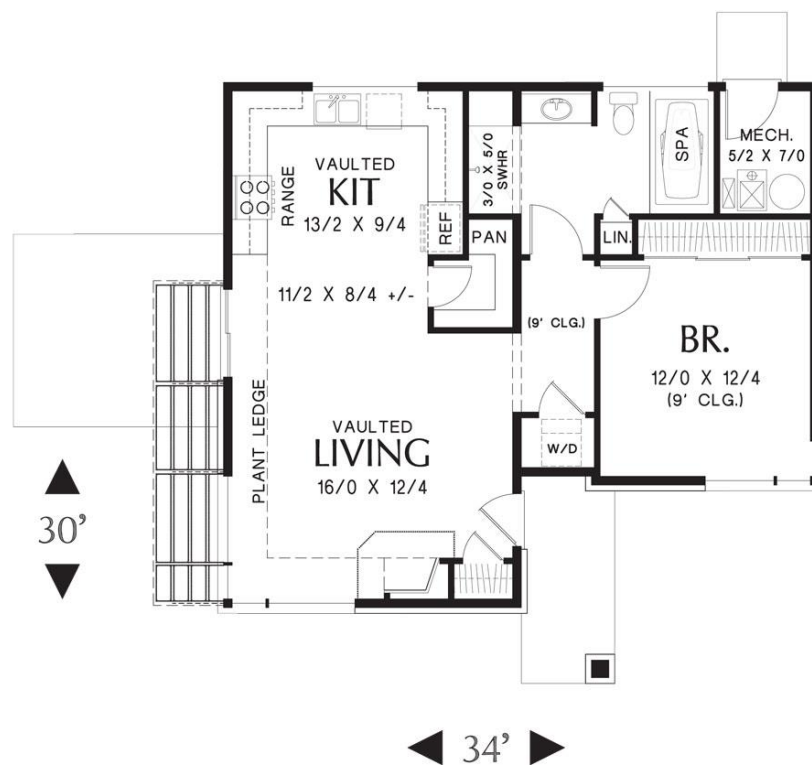


ADU Bowman 7326 (322sf)



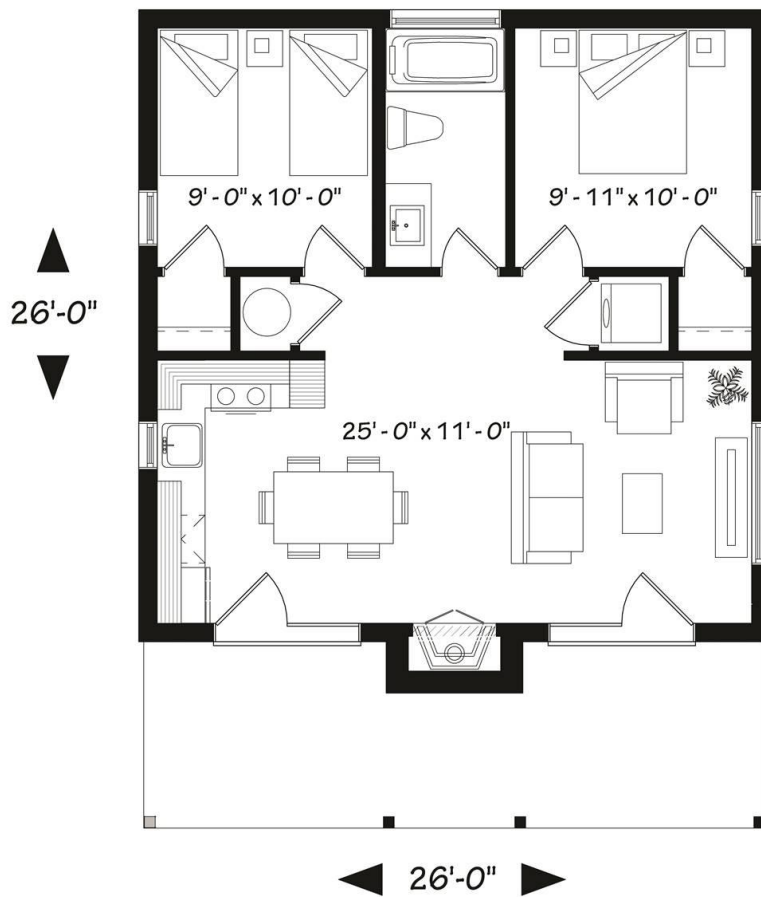


AUD Post-Modern Folkstone 5178 (34'x34') 899sf





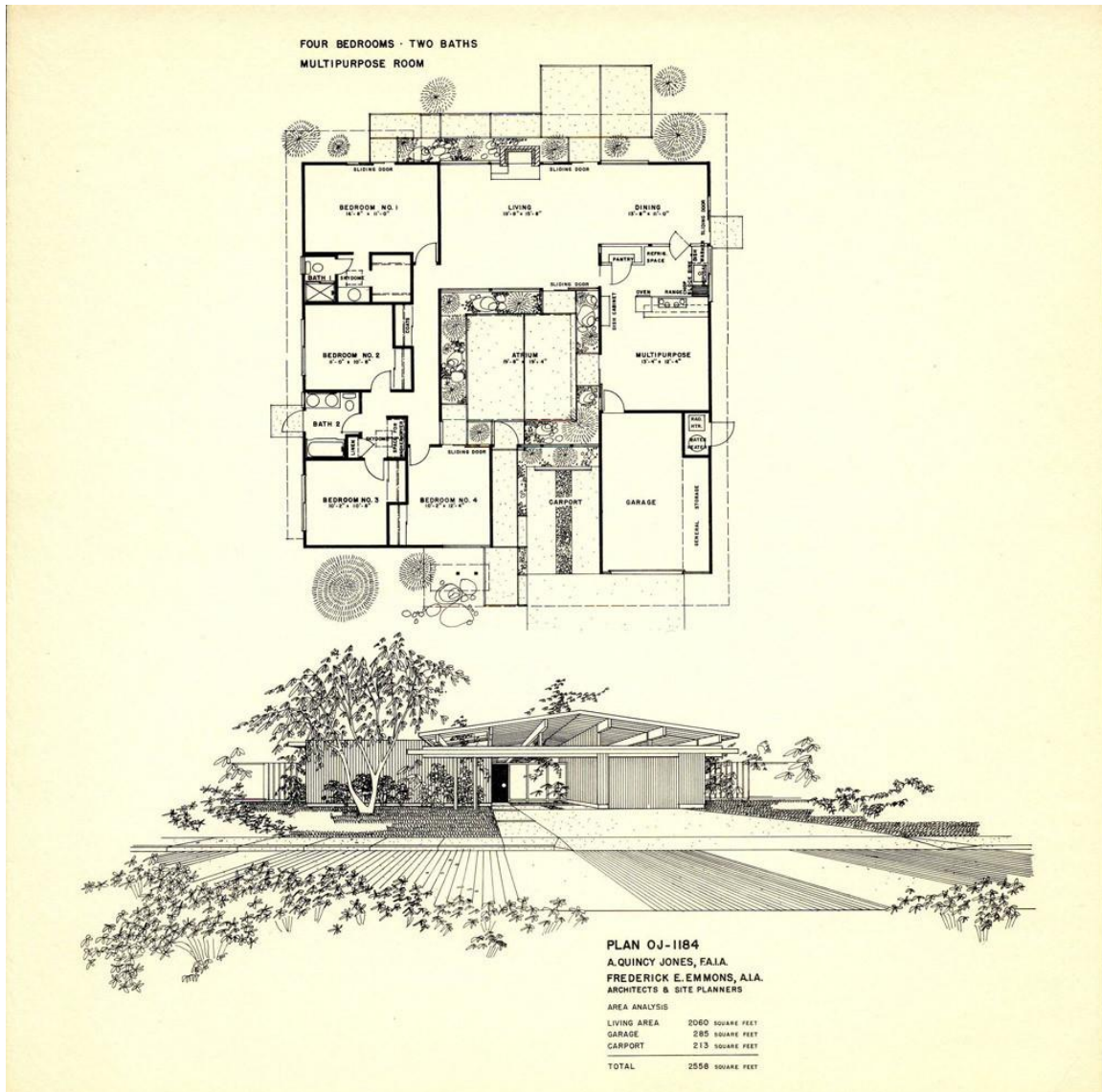
AUD Bonzai 4709 (26'x26') 686

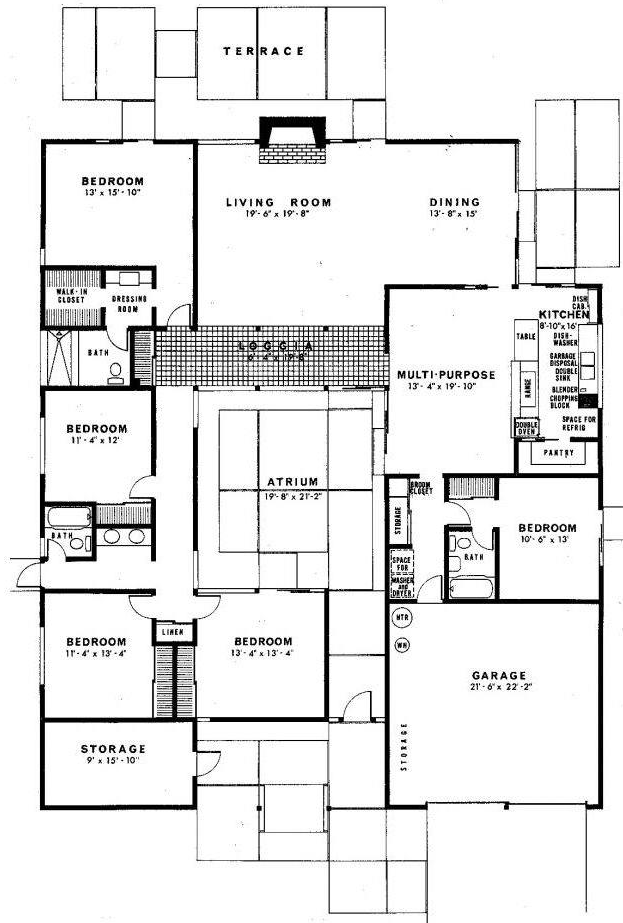
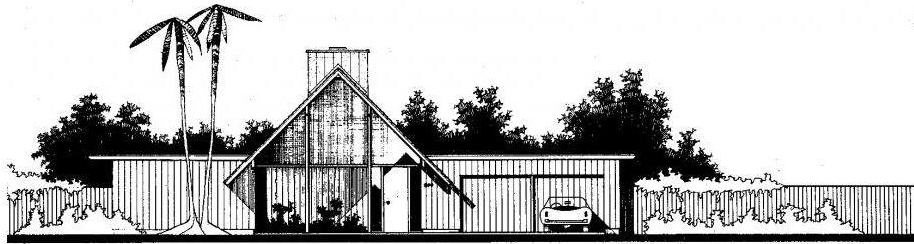


Zero Lot-line Homes



Eichler





PLAN HPO-15

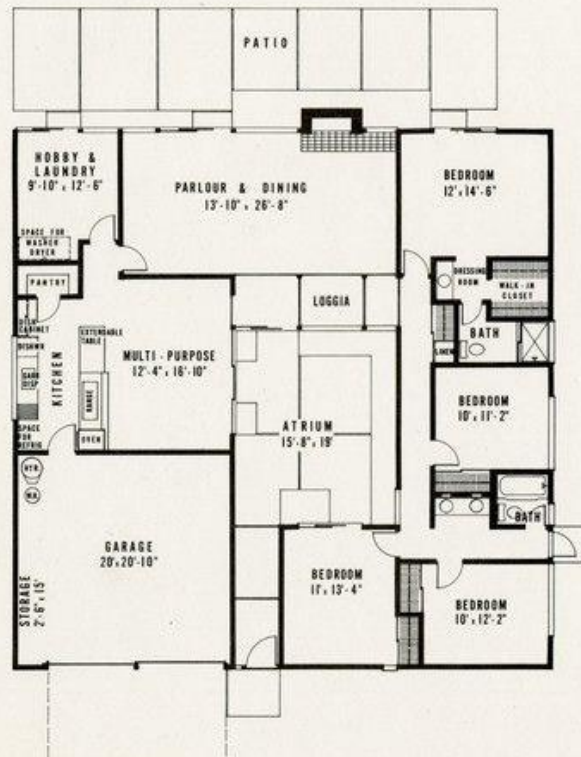
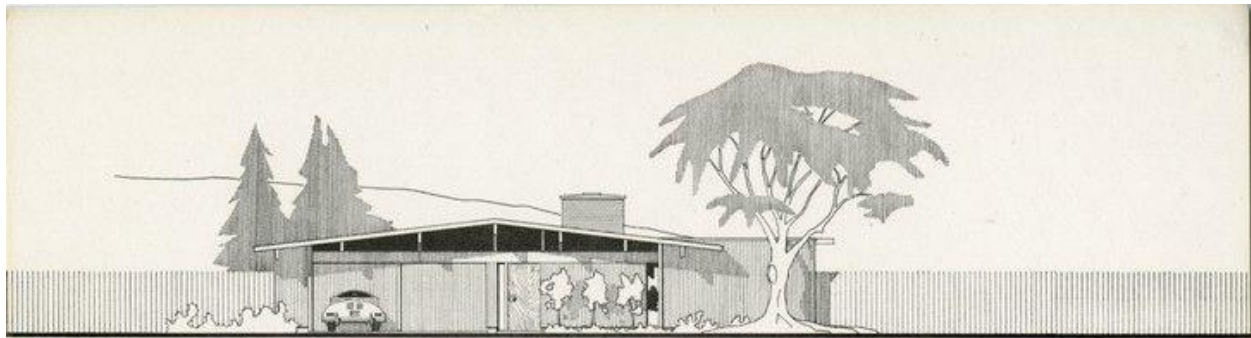
CLAUDE DAKLAND
ARCHITECT A.I.A.

AREA ANALYSIS

HOUSE	2733 Square feet
ATRIUM	501 Square feet
GARAGE	495 Square feet
STORAGE	157 Square feet
TOTAL	3886 Square feet

FIVE BEDROOMS
THREE BATHS
MULTI-PURPOSE ROOM





PLAN CC-174

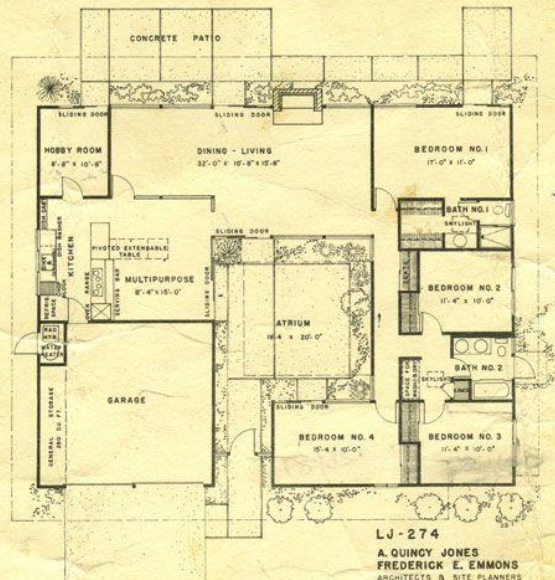
CLAUDE OAKLAND
ARCHITECT

AREA ANALYSIS	
LIVING AREA	2251 Square Feet
GARAGE	647 Square Feet
TOTAL	2898 Square Feet

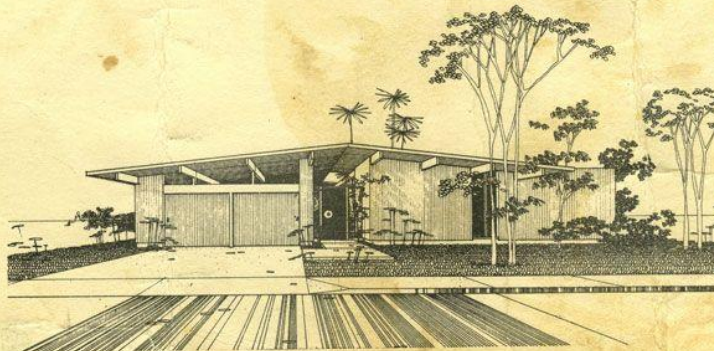
FOUR BEDROOMS
TWO BATHS
MULTI-PURPOSE ROOM



FOUR BEDROOMS.....TWO BATHS.....
MULTIPURPOSE ROOM.....HOBBY ROOM...



LJ-274
A. QUINCY JONES
FREDERICK E. EMMONS
ARCHITECTS & SITE PLANNERS
AREA ANALYSIS:
HOUSE 1876 SQ. FT.
BEDROOM WING 962 SQ. FT.
ATRIUM 459 SQ. FT.
GARAGE & STORAGE 227 SQ. FT.
PLATWORK 719 SQ. FT.



COPYRIGHT JEFFREY CRUSSELL 2013

52x54
76x60
22'



Manufactured Homes





Jetson Green – Green Clayton iHouse



Savannah iHouse



Jetson Green – Green Clayton iHouse





INSULATED CONCRETE FORM HOMES (ICF)



Due to the rapid advance of climate change fires, tornados and hurricanes over the past decade, there now exists a growing demand for durable, energy-efficient concrete homes built using the system of pre-assembled, interlocking insulated concrete forms (ICF). Features include solidity, durability, and design flexibility which allows for the accommodation of unique footprints, angles, curves, and arches at competitive costs to traditional wood-framed construction pairing functionality and beauty.





